

THE GOLD NUGGET

May 2014



Members Who Have Failed to Pay their Dues Have now been Dropped



The Prez Sez by Jim Long



So, let's talk about dredges. I frequently get asked questions from folks about dredging. "I want to know where I can use my new dredge". "What type of dredge is best for Colorado?" "How big a dredge can I use?" And on and on and on!! They usually don't like my answers but it is what it is. So, let's spend a little time and talk about dredging.

First off, you need to understand that panning is how you start. Then you move up to a sluice box to move even more material. And then you graduate to a high banker, or 'motorized sluice' so you can move even more material. So how can you move more material than that and not wind up buying a backhoe and a trammel to do it? Then, you buy yourself a dredge. Ahhh, but now it is a lot more expensive as well. You can't get into a really good dredge for less than a thousand or more, and think a good fifteen hundred to be closer. And that is just the dredge. If the water is more than 2 feet deep, you need a snorkel and mask and since the water is sure to be pretty cold, you are going to need a wet suit, another few hundred bucks. And in order to get to the really 'good stuff', you are going to have to dredge in deep water and now you are going to need to have an oxygen system to deliver air to you at depths of over 5 or 6 feet. And don't forget the weight belt to keep you down. So, as you can see, it is not a cheap venture. So you are probably looking at around 2500 to 3000 bucks.

Oh yeah, and have you heard about the big fight in California over dredging? Dredging is banned out there. And Oregon has banned dredging in many waters. Tennessee is closing a lot of access to their water. Maine is banning lots of prospecting including dredging as well. Arizona and Nevada don't have a lot of water to speak of. Wyoming is closing some areas as well. Idaho and Washington are making noise too. So where can you go? Good question! Answer is, there just aren't a lot of places you can go anymore if you live here and can't travel. You can use your dredge in a few places in Colorado, for now. I can't guarantee how much longer we are going to be able to do it. Around here, you will be limited to Clear Creek Canyon above tunnel 1 up to Colo. 119. Many of our local jurisdictions ban motorized equipment of any kind.

So, what kind of dredge should you buy, if you decide you just have to have one? What is suction dredging? The components are pretty simple really. It consists of an engine with floats, suction hose, air compressor, power jet, pump, nozzle and restrictor ring, a foot valve and screen, a pump intake hose, and a sluice box with riffles, all wrapped into a single package. Basically, a dredge is merely a floating sluice box, with a few necessary add-ons. A dredge will move more material than your high banker and allows you to work right out in the stream without regard to water depth. And you can access parts of the stream/river that others can't get to.



Is it harmful to the environment or to the ecology? Absolutely not! There have been studies after studies that prove that dredging improves fish habitat, helps to remove toxic materials such as lead, mercury, iron and such and does not affect turbidity of the water either. While some turbidity occurs, it is very short lived and water clarity returns to normal usually within 100 yards downstream of the activity. The average size of a dredge motor is about 5hp. A suction dredge engine is air cooled so it adds nothing to the water and is even cleaner than most fishing boats.

A permit from the BLM is needed to dredge portions of the Arkansas River. You can use a dredge on portions of the Dolores River and the Animas River. For the most part, you are limited to a 3" suction hose. Colorado does not have a unified state wide set of rules and regulations concerning prospecting. Therefore, you have to search out the rules and regulations in advance for whatever area you are interested in dredging. You do not want to risk the seizure of equipment you may have paid an awful lot of money for by simply not checking or ignoring the local rules. And the companies that sell dredges aren't concerned about where you will use it. They are just happy to take your money.

And that is about the best advice that I can give you except, Good Luck!

So until we meet again, keep your sunny sides up and may the bottoms of your pans turn bright with that treasured 'Yaller Gold'! You may contact me at 303-452-6087 or at jnslong945@msn.com. Happy and safe prospecting to all!!!



The V.P. Corner by “Klondike” Mike

MINING CLAIMS



This is a follow up from last month’s newsletter on claims and who you can contact for information. If you have any questions I have given you the names of people that can help you. This information is a quote from one of the BLM Web Sites.

General info:

Can I buy a copy of your rules and regulations?

They are free from the internet. For coal rules and regulations you pay per copy at our offices or you can have a copy mailed to you for \$14.00. Minerals rules and regulations cost \$ 5.00 if you pick them up or \$8.00 mailed.

Can you provide me with maps of mine sites?

The Colorado Geological Survey can help you with this. Call- 303-866-2611=ext. 8321

Can you send me a list of all the mines in Co. and the U.S.?

Only in the state of Colorado. Colorado Mining Association will help you with any info you need to contact them at 216 16th st # 1250 Denver, Co. 80202. Ph. 303-575-9199.

How do I contact Archives?

Colorado State Archives is located on 1313 Sherman St. # 1B20 Denver, Colorado. 80203 Ph. 303- 866-2358.

What is a mining claim?

Patented Mining Claim: An unpatented mining claim is a particular parcel of Federal land, valuable for a specific mineral deposit or deposits. It is a parcel for which an individual has asserted a right of *possession*. *The right is restricted to the extraction and development of a mineral deposit.*

The BLM has several Web sites not only for Colorado but for the U.S. and they can get pretty detailed, check them out. Well fellow prospectors it’s getting closer, so hang on to your boots and your waders.

Have a great Month.

As before if you have any questions feel free to contact me, 720-443-9545.

Mike Hurtado (Klondike)

From the Treasurer/Secretary Ledger by Linda Luchtenburg



The May Meeting will feature **5.8 grams of gold nuggets** for the give away with the largest nugget being 1.8 grams. We continue to sell raffle tickets for the ‘Special Nugget Drawing’ and members are encouraged to purchase plenty of tickets as your chances of winning this beautiful 13.0 gram nugget are far better than winning the Lotto. Special thanks go to **Pres. Long, and to the GPR Board** for contributing items for the ‘Members Only’ drawings held at the April Meeting.

This Month GPR Meeting Program:

May 21: The May meeting Program will feature local speaker and author, **Christie Wright**. Christie has spoken to the Club before and puts on a great program. This month, she will speak of **Colorado’s Mining History** and some of our colorful characters of the past. She may be bringing some of her books to sell as well. She is the author of ‘South Park Perils: Short Ropes & True Tales’. She is a historian on South Park and is a member of the South Park Historical Society as well as the South Park Mining Association. Her program should be both entertaining and exciting. Don’t miss it!

June 18: The June meeting will consist of Forum of Club experts who will host a ‘**Question and Answer**’ session from the general membership. Members will have an opportunity to ask questions they have **concerning general mining and prospecting issues**. This will be your chance to pretty much ask anything that is on your mind and the experts will have an opportunity to answer them and share a little of their experience.



Gold Prospectors of the Rockies Page 3

IN MEMORY OF GLENN GLASS

August 26, 1923 - April 12, 2014

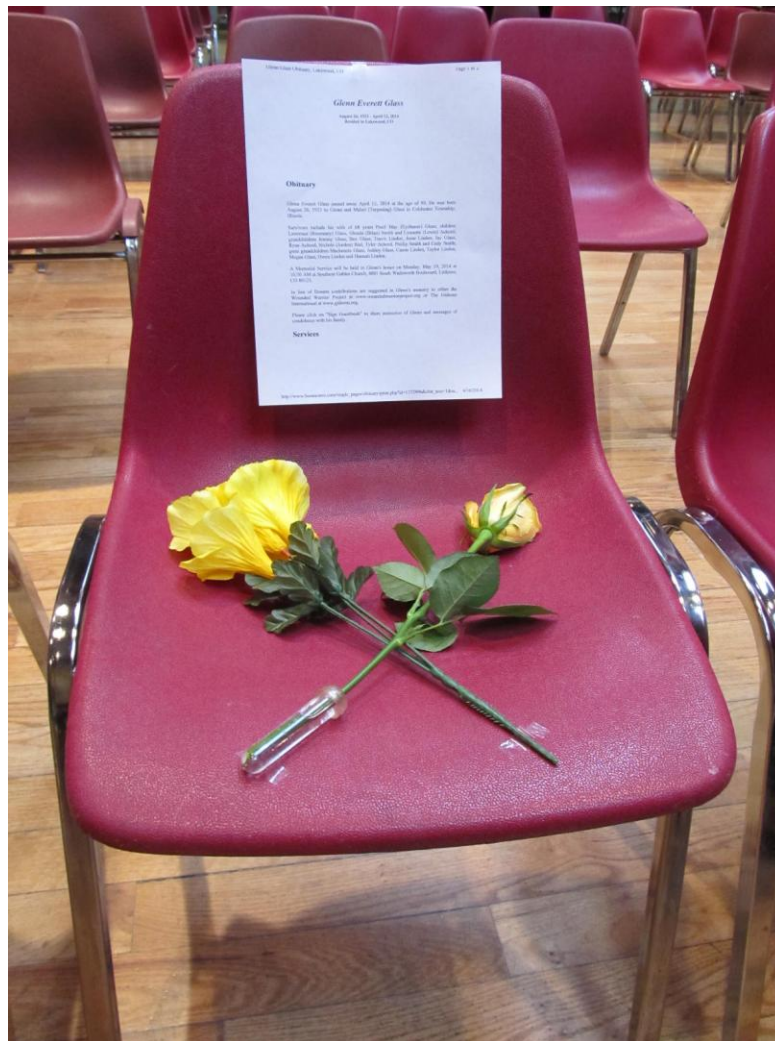
Resided in Lakewood, CO

Glenn Everett Glass passed away April 12, 2014 at the age of 90. He was born August 26, 1923 to Glenn and Mabel (Terpening) Glass in Coldwater Township, Illinois.

Survivors include his wife of 68 years Pearl May (Eychaner) Glass; children Lawrence (Rosemary) Glass, Glenda (Brian) Smith and Lynnette (Lewis) Achord; grandchildren Jeremy Glass, Ben Glass, Travis Linden, Jesse Linden, Jay Glass, Ryan Achord, Nichole (Jordon) Bial, Tyler Achord, Phillip Smith and Cody Smith; great grandchildren Mackenzie Glass, Ashley Glass, Cason Linden, Taylor Linden, Megan Glass, Owen Linden and Hannah Linden.

A Memorial Service will be held in Glenn's honor on Monday, May 19, 2014 at 10:30 AM at Southern Gables Church, 4001 South Wadsworth Boulevard, Littleton, CO 80123.

In lieu of flowers contributions are suggested in Glenn's memory to either the Wounded Warrior Project at www.woundedwarriorproject.org or The Gideons International at www.gideons.org.





Board Meeting Minutes From Apr 2014

X	James Long	X	Joe Shubert	X	Joe Fortunato		Roger Biri
X	Mike Hurtado	X	Joe Johnston	X	Terry Weatherly	X	Brandon Luchtenburg
X	Linda Luchtenburg		Janine Ballentine	X	Andy Doll		

Quorum present? Yes

Call to Order: By JJ at 6:05 pm

Reading and Approval of Minutes: Yes Corrections: Dates of next month's meetings. Approved as read/corrected: Yes

Treasurer's Report: Questions: None Approved: yes

Correspondence: 9 phone calls, 13 e-mails, 9 mailings

Webmaster: Total Hits 134691 Hits for last month 560.

Committee Reports: Pres. Long completed the BoD Manual updates and distributed them.

Unfinished business:

- Tonight will be the vote for the Storm King Dredge posters.
- Pres. Long ordered 6 of the gold/gem maps and gave them to the store.
- Discussed the passing of member Glenn Glass and his tickets.
- The Youngfield issue was discussed and is resolved.
- Tennessee has joined the dredging ban movement.
- Georgetown Railroad folks looking for help with their new 'gold mining approach to their tours.

New Business: None at this time.

Planned Outings for 2014: Refer to Outings Calendar/Schedule in Newsletter for details of existing schedule.

- Apr 26 sat Prospecting Outing on lower Clear Creek at 6811 N. Washington, 9am, bbq at noon.
- May 15 Thu Panning Demo, Aurora Water Festival
- May 17 sat Prospecting Outing, Nederland, 91m, glass contest.

From the Board: Joe J. advised that the Foothills GPAA will be at Tymkovich's on May 4 and the GPOC will be on Point Bar on May 10/11 again this year. There was no additional input from the remainder of the Board at this time. Roger B. and Janine B. were unable to attend the BM.

Announcements: Next Board Meeting May 21, 2014 at 6:00pm. Next General Meeting May 21, 2014 at 7:00pm

Tonight's general meeting program: A 30 minute Presentation by Robert Walters of the Colorado State Parks and Wildlife on "Invasive Species"

Adjournment: Meeting stands adjourned at 6:50 pm.

QUESTION OF THE MONTH

What is the largest placer nugget found in the Western hemisphere?

2014 GPR Board of Directors Members

President

James Long

Vice President

Mike Hurtado

Secretary/Treasurer

Linda Luchtenburg

2 Year Board Members

Joe Johnston (2013)

Joe Shubert (2011)

1 Year Board Members

Joe Fortunato

Terry Weatherly

Andy Doll

Brandon Luchtenburg

Roger Biri

Janine Ballentine

General Meeting Minutes From Apr 2014

1. Meeting was opened at 7:05 pm by **Pres. Long** with the Pledge of Allegiance, followed by a moment of silence in honor of Glenn Glass.
2. Glass's chair was ordered to remain vacant for the duration of the meeting.
3. **Pres. Long** then presented the evening program which was a 30 minute program presented by Robert Walters of the Colorado State Parks and Wildlife on "Invasive Species". The program was very well received and was extremely interesting and informative.
4. **Pres. Long** gave the Metals Report with gold at \$1302.20 an ounce, silver at \$19.63, platinum at \$1434.00 and palladium at \$799.00.
5. Web hits for last month reflected 560 hits for the last 30 days.



Gold Prospectors of the Rockies Page 5

6. **Treasurer Linda Luchtenburg** reported that the Club remains in the black. Report is available for review for anyone who wishes to see it. Also, we are still selling tickets for the 'Members Only' drawing and it is a very large nugget displayed at her desk for all to see. If sales continue to go well, we may be drawing for it in July or so. Remember, your chance of winning this nugget is far better than trying to win the Lottery.
7. **John Johnson** reported from the Membership Table that we had approx. 91 members in attendance. There were also 8 guests and 3 new members who were also in attendance. The meeting attendance was 102.
8. **Sue Clover** read the 'Question of the Month', which was 'Where were the oldest worked gold objects known found'?
9. **Pres. Long** advised that there was time to enter items at the break for the 'Finds of the Month' table and everyone was encouraged to check them out and vote accordingly during the break.
10. **Pres. Long** announced that the Cache had been hidden anew. **Barbara Barrow** presented Clue #4.
11. **Pam and George Schmitt** informed the group to be sure to check the new items in the Club Store and to support your Club by buying Club products with the Club Logo on them. We have introduced some Colo. Gold and gem maps for sale.
12. **Pres. Long** informed the membership that the Tour of the Golden School of Mines Geology Museum was a great success with nearly 40 members attending. The Beginners Panning/slucing Class also saw nearly 40 people in attendance and everybody there had a good time and Pres. Long's guarantee of every attendee finding gold continues to be solid gold. We will have our first prospecting Outing on April 26 starting at 9am at 6811 N. Washington on Lower Clear Creek. A bbq will be held at \$5 a head. High water is on its way and it will be here early. We hope to get this Outing done before it strikes. The Youngfield stretch of Clear Creek has new boundary signs up and they are accurate. Please follow the Rules. The City of Westminster is considering a ban on metal detecting. They are currently issuing permits which are free. You are encouraged to go get one just to show that the detecting community is a large one and a responsible one. 2014 dues are now overdue and anyone not paid up is encouraged to catch up as soon as they possibly can. We will be dropping unsigned members after the April Mtg. There was nothing further discussed from the Floor.
13. **Pres. Long** announced the break at 8:18pm. Meeting was called back to order at 8:35pm.
14. **Pres. Long** announced that there were only 42 winners of the 'Question of the Month'. The answer was 'The Varna Necropolis' in Bulgaria. The winning tickets were passed out to the lucky winners.
15. **Pres. Long** announced that there were a number of submitted entries for the 'Finds of the Month'. The winner of the 'Most Raw Gold' was **Todd Fiddler** with 5.3g of gold that he found in his secret spot in the mountains. "Best Artifact category was **Joe Johnston** with 2 old keys found in Erie, Colo.. Congratulations to each of our March Monthly winners. Be sure to show off your finds each month at the meeting. Each monthly winner will need to save his/her finds for next November to be entered into the Finds of the Year competition.
16. **Pres. Long** concluded the evening with drawings for numerous door prizes donated by the **GPR, Pres. Long**, and followed by drawings for the gold nuggets. A reminder that holders of drawing tickets for the regular gold drawings who did not win and want to redeem those tickets may present them at the end of the Meeting and they will be reimbursed at .01 cents on the dollar, or they can choose to donate the tickets back to the Club. Those assisting Pres. Long in the drawings were **Chuck Cown** and **Linda Luchtenburg**.
17. **Pres. Long** informed the members that sometimes during the meetings, his time is over whelmingly taken up by the many who wish to speak to him and he apologizes if anyone ever feels like he is unavailable. It is not his intent to be inaccessible and he encourages anyone with questions to contact him by phone at any time. His phone number is on the web site.
18. **Pres. Long** thanked **Kris and Joe Kafka** and all those who contributed to the Refreshment Table. Any member is encouraged to chip in and add to the spread each month. With the number of attendees skyrocketing recently, this really helps the folks who run the table and those who volunteer up front each month. The Club appreciates the efforts that each and every one of you to make the refreshment table enjoyable.
19. The scheduled **Program for May will be** a presentation from Christie Wright on Park County History. This should be an informative and interesting presentation as Christie is a great speaker. She may have her new book available for purchase as well; it is about famous outlaws and other vagabonds of Park County.



Gold Prospectors of the Rockies Page 6

20. Until next time, prospect safely, live long and be grateful for that golden bounty from the stars, that gleaming magical miracle called 'gold'!
21. The Meeting was adjourned at 9:01pm.

Schedule of 2014 Planned Outings:

We are starting a new year and are in process of scheduling speakers and programs, outings, tours and other events for the year. If anyone has any suggestions, please contact a Board Member with your ideas and information. We want to try to provide the things you are interested in. We tentatively have 20 events planned for 2014.

Jan 25 Sat Tour of the Western Museum of Mining and History, Colo. Sprgs, 1pm. Bring your members badge.

Feb 22 Sat Tour of the National Mining Museum, Leadville, 1pm, signup sheet at meeting. (CANCELLED)

Mar 22 Sat Tour of the School of Mines Geology Museum, 1pm, signup sheet at meeting.

Mar 29 Sat Beginners Panning/slucing Class at 6811 N Washington, 9am-12noon, bring pan, boots, snuffer bottle & vial

Apr 26 Sat Prospecting Outing, Clear Creek, 6811 N. Washington St., Adams County, 9am-5pm, bbq at noon. **date change**(CANCELLED DUE TO HIGH WATER)

May 15 Thur Panning Demo, Aurora Water Festival, 9a-2p. Will need 8 volunteers.

May 17 Sat Prospecting Outing, in Nederland, Glass Cleanup Contest, 9am-5pm, in City Limits.

date change

Jun 7 Sat Prospecting Outing, Lake Gulch, Blackhawk, 9am (Clay County Mine). This is a dry claim.

July 22 Tue Panning Demo for Japanese Exchange Students, Idaho Spgs, 1p-4p***date change***

July 25, 26, 27 F,S,Su Prospecting Outing, on Lake Creek, Leadville, 5.00 @ day @ person, bbq sat. Nite @ 5.00 @ person. Some camping on property, \$3.00 @ day. This is Fri, Sat, Sun.

Aug 3 Sun Beginners Panning/slucing Class at 6811 N Washington, 9am-12noon, will be a signup sheet.

Aug 23 Sat Prospecting Outing, Lake Gulch, Blackhawk, 9am. (Clay County Mine). It is a dry claim.

Aug 30 Sat Club Picnic at Cross Park, 20th and Carr, Lakewood, Pot Luck, 12 noon-3pm.

Sept 4,5,6 T,F,S Panning Demo, Highlands Ranch Festival, 9a-2p each day, there will be a sign up sheet.

Sept 20 Sat Panning Demo, Idaho Springs Festival, 10a-3pm, there will be a sign up sheet.

Sept 27 Sat Prospecting Outing, Lower Clear Creek, 9a until dark at 6811 N. Washington. Bbq at noon.

Oct 15 Wed Pumpkin Carving Contest, regular meeting night, compete for prizes

Oct 18 Sat Panning Demo for Arapahoe County Fall Festival, 8181 S. Parker Rd, 10a-3p

Nov 9 Sat Metal Detecting Outing, Majestic View Park, Arvada, 10a-1p. Prizes to be won.

12-18 Wed Annual Christmas Pot Luck Dinner, members only, no regular meeting, arrive at 6pm, eat at 6:30

Finds of the Month

Be sure and bring your treasures and finds in to share with the rest of the Club. Winners each month will have their name published each month in the Newsletter. There are six (6) categories to choose from when entering. The winners in February were:

Most Raw Gold: Winner is **Todd Fiddler** who submitted 5.1 grams of gold he found in his secret spot up in the mountains.

Best Artifact: Winner is **Joe Johnston** with 2 old keys found in Erie, Colo.

There were several other submissions from Mike Hurtado and Kevin Singel and we encourage everyone to bring in and share their finds each month.

Monthly winners will need to save your find and present it next November for the Find of the Year competition and for the chance to be recognized as Best Find of the Year.



Birthstone

The World of Birthstones

In the ancient world, precious gems were prized just as highly as they are today. Gemstones continue to shatter record prices at auction houses around the world. For 2014, rather than just the monthly birthstones, we will offer a little more of



Gold Prospectors of the Rockies Page 7

the ageless secrets of birthstones by tying them to the lunar calendar. We will give you a little extra, courtesy of the National Jewelers Society. This means that the birthstones you would normally associate with your birth month are actually tied a little closer to your Zodiac Calendar. So, let's check it out a little bit.

Lunar Month: April 20 to May 20

Planet: Venus

Zodiac Sign: Taurus

House: 2 nd

Birthstones:

NJA1911

Affinitus

Exodus 39

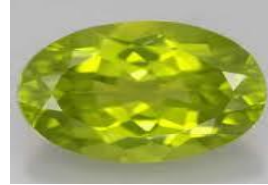
Revelation 21

Emerald

Morganite

Chrysolite

Sapphire



(Taken from the National Jewelers Association and the AmericanGemSociety.Org web site)

Prospecting/Mining Notes

(mostly from the Denver Post, Internet and other wire services)

4-23-14 Newmont Mining Profits Fall: Newmont Mining, which is said to have held merger talks this month with Barrick Gold, reported first quarter earnings that beat analysis' estimates as gold costs declined. Net income fell to 100 million or 20 cents a share, down from 314 million, or 63 cents, a year earlier.

4-26-14 Barrick Gold, Newmont Mining End Merger Talks: Talks between Newmont Mining and Barrick Gold have ended, marking another failure in the long history of merger talks between the world's two largest gold miners and leaving them both still facing the sector problems that both had been hoping to partly alleviate. Toronto based Barrick reported that it was Colorado based Newmont that initiated the decision to terminate the talks amicably. The two sides have talked on and off for decades.

A Miner's Laugh

An old miner named Bill feared his wife Peg wasn't hearing as well as she used to and he thought she might need a hearing aid. Not quite sure how to approach her, he called the family Doctor to discuss the problem.

The Doctor told him there is a simple informal test the husband could perform to give the Doctor a better idea about her hearing loss. 'Here's what you do,' said the Doctor, 'stand about 40 feet away from her, and in a normal conversational speaking tone, see if she hears you. If not, go to 30 feet, then 20 feet, and so on until you get a response.'

That evening, the wife is in the kitchen cooking dinner, and Bill was in the den. He says to himself, 'I'm about 40 feet away, let's see what happens.'

Then in a normal tone he asks, 'Honey, what's for dinner?' No response. So old Bill moves closer to the kitchen, about 30 feet from his wife and repeats, 'Peg, what's for dinner?' Still no response. Next he moves into the dining room where he is about 20 feet from his wife and asks, 'Honey, what's for dinner?' Again he gets no response. So, he walks up to the kitchen door, about 10 feet away. 'Honey, what's for dinner?' Again there is no response. So finally, he walks right up behind her. 'Peg, what's for dinner?'

'For crying out loud Bill, for the FIFTH time, its CHICKEN!'

(Taken from the internet and revised just for all us 'old miners'.)



Back in the Day

Alice....Alice was the largest of the many camps along the Fall River. During the boom, cabins were spread throughout the pocket at the end of the valley, below St. Mary's Glacier. There were many claims here, but only a handful were developed to any extent. The Alice and the Kaminky were, perhaps, the largest of the mines. The region was settled in



Gold Prospectors of the Rockies Page 8

the early 80's when some placer gold was found along Fall river. More than \$50,000 in gold was taken out of Alice in those first few months. A stamp mill was erected and later, some lode mining was done and Alice took on most of the appearances of a permanent city.

The Alice Mine and other properties were sold on hand for a quarter of a million dollars in 1897. The deal called for a cash payment of \$50,000 and two yearly payments of \$100,000. The new owners planned to enlarge the 200 ton concentrator mill and bring into use several large air drills. There were already several tunnels built, the largest one being 600 feet. Apparently, however, about the time the last payment was due, in 1899, the mines closed, and Alice was soon deserted. There has been a little mining activity since then, but not very much.

Ruins of many of the cabins can still be seen, scattered among the pines. However, signs of past mining activity are fast being obliterated by increased summer tourists and new summer homes being constructed in the area. A huge Lodge now covers much of the cup at the end of the valley. Tourist cabins dot all along the road.

Overlooking the scene is St. Mary's Glacier, one of Colorado's most famous glacial formations. Here is one of the few spots in the state which holds enough snow year around to permit summer skiing. The glacier rests on Kingston Peak (12,136 feet). At the foot of the glacier is St. Mary's Lake. Nearby is Silver Lake. Alice also has its Glory Hole, a 150 foot deep mining excavation, a short distance off the main road. Alice was once an important stop on one of the main roads between Central City and Idaho Springs over Yankee Hill. Central City is just a short distance away on this route. But although jeeps can generally make it today, the road is difficult and becoming more so by disuse.

Silver City.....Silver City was one of the shortest lived communities in the area and at one time had a population of about one thousand. But the site consisted of little more than tents and brush huts and the miners soon pulled those down when they discovered that the ores around weren't worth the trouble to take out. Silver City was located on the upper Fall River. Virtually all of its life span was contained within the year of 1860.

Yankee (Yankee Hill)....A jeep now and again travels up Yankee Hill to the old site of Yankee. A few cabins and mine holes remain as souvenirs of the past activity here. The time was when Yankee Hill was a well-traveled route between Georgetown and Central City. It was certainly the shortest route. Yankee, located at the top of the hill opposite of Alice, was an important stop on the route, as well as a mining town. The mining was never developed to any great extent, but the site was occupied for several years. A new concentrator mill was built here in 1905 to handle the ores from the Gold Anchor Mine. Yankee Hill was named during the Civil War by northern sympathizers. The town was named for the hill. Some sources say it was vice versa.

Apex....Sledders and skiers zoom down the road past Apex and the Palace Dancehall and Saloon now. But back in the day, Apex and the Palace were famous, bustling and prosperous. Apex was the center of the Pine Creek Mining District that came to life during the 90's. The best mine at Apex was the Mackey, and it has a curious history. The mine was originally owned by Dick Mackey. It was taken over by a fellow named Mountz and his partners. They had hardly begun work on the mine when the partners ran off with \$30,00 leaving Mountz with only \$400 in working capital. Mountz did all he could, working carefully and frugally. He drove in a tunnel, but alas, it was no good. His money ran out. In disgust, Mountz planted a load of dynamite to blow up the whole mess. The blast uncovered a rich lode. Mountz ordered a bundle of ore sacks from Denver, on credit. He ordered two four horse teams and wagons from Central City, on credit. He was in business. The first ore assayed at \$1800 dollars a ton. Mountz paid up his bills and never needed credit again.

There were several good mines within a radius of four to six miles of Apex in all directions. There was the Schultz Wonder, a mile and a half south of Apex. Next to it was the Webstein with an 1800 foot tunnel. On Nevada Hill were the Jersey City, Rooster, Evergreen, and other good mines. A mile east of Apex was the Tip Top, which was not only a good mine but also its opening afforded a magnificent view of the countryside.

Apex, although never very large, was one of the most sophisticated towns in the entire region. The Apex Hotel, one of the two hotels here, was one of the best in the county and did a thriving business. The big Palace Dancehall was always busy. The newspaper, *the Apex Pine Cone*, was one of the most popular newspapers in Colorado at the time. There was a school and a couple of churches. At its peak, around the turn of the century and for a few years after that, Apex had a total of about 100 businesses. The population, however, never got much over the 1000 mark.

In recent years, some private parties have taken over some of the remaining cabins at Apex and have improved them. But the old Palace is still just about the way it was when the miners went off and left it, but a little worse for the wear. Up the road that cuts through town, just beyond the Palace, is the cut off for Nugget and American City. Down the road is a beautiful view, one of the main reasons that Apex was so popular.

(Taken from 'A Guide to Colorado Ghost Towns and Mining Camps by Perry Eberhart, 1959)



MICROWAVE GOLD KILN

You CAN Smelt Gold, Silver, Copper & Old Jewelry
IN A MICROWAVE

GPK COMPANY



www.microwavegoldkiln.com

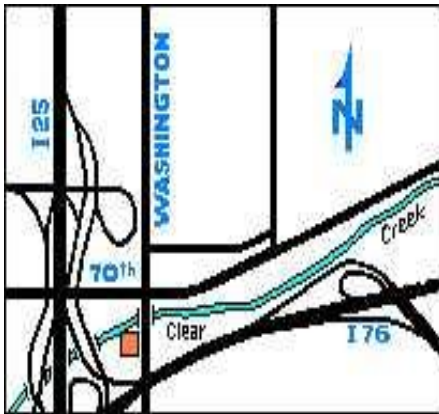
Caren Seabeneck

Cell 208-921-4561 or 928-634-3455

caren@microwavegoldklyn.com

10% Discount to GPR Club Members! Exp: 12/2014

TYMKOVICH MEATS



Established 1952
6911 N.

Washington St,
Denver, CO 80229

(303) 288-8655

Open Wed-Sat

9:30 to 5:30

(Closed Sun-Tue)

GOLD - N - DETECTORS

A METAL DETECTING &
PROSPECTING
CENTER



(303) 278-6622

802 Washington Ave.
Golden, CO 80401

“Denver area’s award winning hobby
store, where we do what we sell.”

- Metal Detectors
- High Bankers
- Rock Tumblers
- Books
- Goldpans
- Dredges
- Rock Picks
- Accessories

Open 9-6 Monday through Saturday

VISA, MasterCard, Discover

Wild West Traders LLC

COINS GOLD SILVER

Buy – Sell Collections – Scrap
Historic, Rare, and Unusual Coins

Downtown Golden by the Welcome Arch
1111 Washington Ave Ste #105 303-279-1844

PLACE YOUR AD HERE

PLACE
STAMP
HERE

The Gold Nugget

Gold Prospectors of the Rockies
PO Box 150096
Lakewood, Co 80215-0096

ADVERTISING IN THE GOLD NUGGET

Commercial Ads

- 3.6" x 2.0" Two Column Inches (Business Card Size)..... \$6
- 3.6" x 4.3" Four Column Inches..... \$12
- 7.5" x 4.3" Eight Column Inches (Horizontal)..... \$24
- 3.6" x 9.3" Nine Column Inches (Vertical)..... \$24
- 7.5" x 9.3" Eighteen Column Inches (Full Page)..... \$48

For information to publish your "Ad" in The Gold Nugget, please contact the Editor. **COPY DEADLINE** is due to the editor by the 25th of the month for publication in the following months' issue of the Newsletter.

Contact the GPR President

(Layout Design Subject To Additional Cost)



Coming Announcements and Special Events for June 2014

(WMMI - Western Museum of Mining & Industry, 225 North Gate Blvd. Colorado Springs, CO 80921 (www.wmmi.org))

SUN	MON	TUE	WED	THU	FRI	SAT
1	2	3	4 Battle of Midway Begins	5	6 D- Day	7 Newsletter Advert/Article Copy Deadline
					WMMI Pike's Peak Gem & Mineral Show	
WMMI Pike's Peak Gem & Mineral Show	9	10	11	12	13	14 Flag Day
15 Father's Day	16	17	18 GPR Club Meeting	19	20	21 Summer Begins
22 GI Bill Signed	23	24	25 Start of Korean War	26	27	28
29	30					