

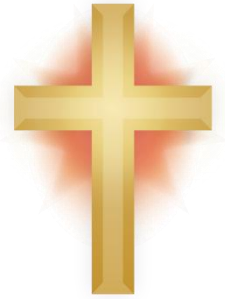
THE GOLD NUGGET

June 2020

Obituary

Charles 'Chuck' Harris

It is with profound sadness that I report the loss of Chuck Harris, also fondly known to many as 'Charlie Brown'. Chuck passed away in February of non-covid reasons. He was an avid metal detectorist and well known in the detectorist community. He was a long time Club member, having joined back in 2000, and always enjoyed the meetings and the chance to win a gold nugget. A Westminster resident, Chuck was often seen out swinging his detector in a city park located just about anywhere within the greater metropolitan area. His health had been waning in the last year or so and he had been in an assisted living center at his passing. He will be sorely missed and he was a good friend to all those who knew him well.



The Meetings for June, July and August have been Cancelled!

I received a call from the Clements Center to advise me that the City of Lakewood had decided to suspend all activities at the Center for the months of June, July and August. This action was taken as a direct result of the Corona Virus Pandemic. They will reassess the situation at the first of August and the Club will inform the membership of any change in the situation, but for now.

ALSO

The **Prospecting Outings Scheduled for Black Hawk have also been cancelled.** They are dependent upon Gilpin County opening up their restrictions. Again, I will notify the membership as soon as I can determine any change in their regulations! Until then, please stay safe and pray for an early return to normalcy!

The Prez Sez by Jim Long



The 'Safer at Home' Order has been issued for most of Colorado until further notice. However, the state is attempting to return to some form of normalcy in small doses and feeling its way through a labyrinth of problems and situations. We are included in that group of entities which kind of fall into limbo. Our fate depends on the State, and/or Jefferson County, and/or the City of Lakewood deciding on how many people can attend a function. Our meetings draw from 75 to 100. That number will depend on when we will be able to reconvene any meetings. We also rely on Gilpin County to provide guidance on when we can get back to prospecting at our Black Hawk site. So the bottom line depends on a number of governmental entities making decisions that control what we can or cannot do. I will advise everyone the very moment I get a decision from anyone that effects our organization.

In the meantime, I have done a little reflecting. There are many folk who have been getting out to prospect on the local waters. I have been asked if it is safe or not. Even so, high water season is now upon on and that will change how some view prospecting at the moment. While I cannot be responsible for saying yes or no, for reasons of personal liability, let me say this about that. I would not hesitate to personally go out and prospect, either by myself or with a partner or two or three. Though I have not to date, it is simply because I cannot risk subjecting my wife, who is totally bedridden, to any risk no matter how slight. And for that reason, I wear a mask religiously when I do go out for groceries or for any reason at all. To be fair, I only wear it when I am inside a business where there are other people close. My research and the



Gold Prospectors of the Rockies Page 2

numbers clearly tell me that the risk will diminish as summer arrives and things heat up. And the actual risk of spread out in the open air is very minimal at best. I know that when I crunched the numbers on April 15, the chance of contracting the virus in Colorado was a mere 0.0036 %. And the chance of dying is only 0.00015 %. Yup, you are reading those numbers correctly, so pretty dang slim actually. I also know that 70 % of all deaths to date have taken place in nursing homes or similar facilities housing the elderly. And that the strong majority of all deaths have been over the age of 70. So all of this needs to be put into perspective, and so I am not going to spend too much more time on this subject other than to say that I personally believe that the media hype has deliberately created a lot of the panic response and that I believe there is a hidden agenda to a lot of this. I also know that the chance of me being killed by getting hit by lightning, or a drunk driver, a heart attack, a stroke, or from a hundred other sources are far greater than covid-19. And I know there will be a resurgence of this in the fall as temperatures cool down. Just like every year with the flu...! And after what we have just been through, I have no idea what the response to the 'fall wave' will ultimately be. We should have a vaccine by Christmas.

I do know that the national and local economies have been trashed and that millions have lost their jobs and thousands of small businesses will never open again. And that is a crying shame. Yes, we will recover and it will take a little time, but I have faith in our country as one of the strongest in the entire world. There is nothing we can't accomplish if we choose to do so.

I am amazed that gold has not shot up to record highs in the face of the DOW and S&P crashing so low since last March. But it has been holding right around and slightly north of 1700.00 for the last three months and not showing any inclination to sharply go one way or the other. PLP and the ICMJ folk have been winning the battle in Washington and Pres. Trump is very interested now in their proposals. He has clearly seen the danger that China represents in their monopolizing of the Rare Earth Elements and metals that are so necessary to our national security. We have ample sources and deposits of these REE.s right here in America but the liberals from the Obama Administration and the EPA have hamstrung and over regulated the mining of them until they literally strangled that aspect of mining and literally killed it. And so much of the mining of precious minerals in general has been feeling the impact of this over regulation and strangulation that we are seeing the impact of that on gold and silver mining as well. I believe that China is truly the planetary earth boogie man and purely evil. I strongly encourage each of you to check everything you buy and buy nothing whatsoever from China, ever again...! Problem is, everything is made in China today. We need manufacturing brought back to America and companies who deal with China should be taxed into oblivion!

Anyway.... that is the view from here and I wish you all Good Luck in your endeavors, no matter what they may be...! And until we meet again, keep your sunny sides up and may the bottoms of your pans turn bright with that treasured 'Yaller Gold'!

You may contact me at 303-452-6087 or at jnslong945@msn.com . Happy and safe prospecting to all!!!

The V.P. Corner by "Joe Fortunato"



Hello again folks, I hope that all of you are well and continuing to cope with the current situation. It looks like things are starting to open up and move in the direction of normal. I am happy to see the easing of restrictions, but it is going to take some time to get this train roaring down the tracks again. I am saddened to hear that fellow club member, Chuck Harris, passed away. Chuck and club member, Don Tiglas, were two of my metal detecting mentors when I was getting started in late 2003. I learned a lot from them, and cherish the memories of the detecting outings that we shared. We finally made it back to our cabin over Memorial Day weekend, it was the first time we have been there in four months. We keep our cabin open during the winter months, so I always worry about the status of things when we are away. I was relieved to find everything in order. The weather wasn't the greatest, and we even got a little snow. I spent a lot of time reading and watching a variety of videos about prospecting and metal detecting for gold what a surprise!!! One thing that popped into my head while in the midst of that prospecting and metal detecting marathon sure put a smile on my face. I realized that in three or four weeks, I would be able to get into one of my favorite spots for gold here in Colorado!!! Not long ago, it seemed as though it would be months before I would be able to access that area, now it is just around the corner!!! I had to cancel my spring trip to Nevada because of the corona virus situation, so this upcoming trip here at home is going to feel like a get out of jail free card. The thing that I like about this particular spot is that it has both placer and detectable size gold. I am a believer in always having a plan A and a plan B when prospecting, and a plan C is not a bad idea also. I didn't make it to this spot in 2019, but I found a nice piece of gold there in 2018 using my new GM 1000 detector for the



Gold Prospectors of the Rockies Page 3

first time. I am thinking about getting out to do a little coin and jewelry hunting here at the end of May. I haven't detected in months, and don't know what the weather forecast is for the last weekend of May. I hope that at least one day works out for me. By the way, if one of you would let me know where the ON/OFF button is on a Whites DFX metal detector, I would really appreciate it I seem to have forgotten!?!?!? UNTIL NEXT TIME...MAY ALL YOUR ADVENTURES BE...GOLDEN !!!!! Questions or Comments Call or text me 303-263-7204 Joe Fortunato

From the Treasurer/Secretary Ledger by Joe Kafka



The Coronavirus has disrupted everything so whenever we are able to reconvene, the next Meeting will feature a nine (9)-nugget giveaway that will include a 2.4-gram nugget. We should have a new "Special Nugget" by then as well. Be sure and bring extra cash for the nugget giveaways The Club remains in the black and members may request to see the financial report at any time that I have at my desk in the back. Hope to see you all there at the next meeting.!!

Board Meeting Minutes From ??? 2020

James Long	Joe Shubert	Joe Fortunato	John Johnson
Mike Stevens	Joe Johnston	Chris Kafka	Brandon Luchtenburg
Joe Kafka	Bobby Manning	Andy Doll	Gary Hawley

THERE WAS NO BOARD MEETING FOR MAY DUE TO THE CORONAVIRUS PANDEMIC.
HOPE TO SEE YOU NEXT MONTH.

QUESTION OF THE MONTH FOR THE NEXT TIME WHENEVER WE MEET?

Subtract the # of electrons in an atom of gold from its atomic weight and that number is the answer to this month's question.

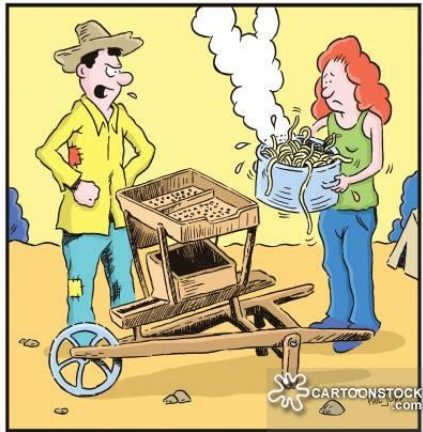
- 2020 GPR Board of Directors Members**
- President**
James 'JJ' Long
 - Vice President**
Joe Fortunato
 - Secretary/Treasurer**
Joe Kafka
 - 2 Year Board Members**
Joe Johnston (2017)
Joe Shubert (2018)
 - 1 Year Board Members**
Andy Doll
Brandon Luchtenburg
John Johnson II
Bobby Manning
Chris Kafka
Mike Stevens
 - Past President**
Gary Hawley

General Meeting Minutes From ??? 2020

DUE TO THE CORONAVIRUS PANDEMIC, THERE WAS NO MEETING. WE HOPE TO MEET SOME NIGHT??



A Miner's Laugh



"No, you can't drain the spaghetti in it!"



Taken from the internet and revised just for all us 'old miners'

The finds of the Month 2020:

Be sure to bring your finds of the month that you have collected since the **February meeting**. All those finds will be in competition when we can reconvene next, which may in fact, not be until May. The judging has started anew for the year 2020 and the November 2019 Finds are included in the 2020 contest.

Be sure to save all your winning items for the November 2020 judging.

FORGOTTEN SHORT STORIES OF THE KLONDIKE GOLD RUSH

The Buffalo Soldiers

The Gold Rush occurred shortly after the Civil War, so it was still a time when military units were strictly racially segregated. The RCMP was scrambling to maintain order, secure the border between Canada and the United States, and ensure that those who were coming into the country were bringing their own supplies with them—to put it mildly, they were overwhelmed. So the United States military sent in the Buffalo Soldiers. Company L of the 24th Infantry Regiment was comprised mostly of soldiers hailing from the Deep South trying to make better lives for themselves and their families while living among overt racism. The Buffalo Soldiers received their name from another US minority—Native Americans, whose tribes likened the Regiment's fighting prowess, skill, and bravery to that of the buffalo. The unit was tasked with cleaning up Skagway, Alaska—a Gold Rush boomtown that had become "little better than Hell on Earth."

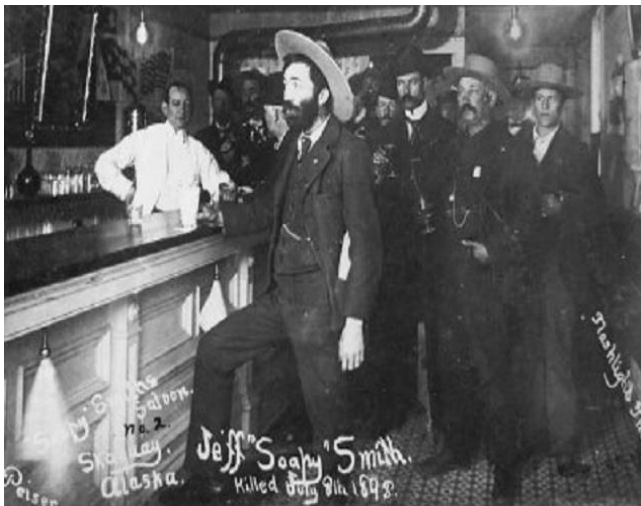
Arriving there in 1899, the Buffalo Soldiers found con men preying on prospectors and violence in the streets. Not only did the soldiers drive out the criminals—while facing much of the same racial prejudice that they experienced in the US—but they also paved the way toward preserving what would eventually become a piece of history. At the same time Company L was saving Skagway and making sure its citizens and prospectors didn't go hungry, they were also building the first museum within a national park.





Gold Prospectors of the Rockies Page 5

Soapy Smith



Jefferson “Soapy” Randolph Smith was already a famous con man before he headed up to the Klondike to see what fortunes awaited him there. Called the “King of the Frontier Con Men,” it wasn’t long after his arrival in Skagway that he had his fingers in every illegal activity in town. In May 1898, he opened his own establishment from which he ran his gang of con men, thieves, and cutthroats. The bar even contained secret exits that would allow these shady characters to quietly escape with their clients’ money. One of his less violent cons was the establishment of a telegraph office—a reassuring sight for newcomers who wanted to let those back home know that they’d arrived safely. For \$5, the operation would send a telegram for you—the only problem was, there were no telegraph wires in the town. Once lured into the office to supposedly send their message, the mark would witness an ongoing card game where one player was suddenly

called away. The friendly card players would offer the newcomer his seat and proceed to take him for everything he had. Soapy Smith’s reign of terror continued without incident largely because he had bought the United States Marshall’s cooperation. He also had his own personal guard in the guise of a military unit. This led to the assignment of the Buffalo Soldiers to clean up the crooked town. After the USS *Maine* was sunk off the coast of Cuba, Smith rode the wave of sudden patriotism. He even petitioned the War Department for permission to form his own official division of the US Military—and he received it. It allowed him to not only assemble his own troops, but to legally use them—in any way he saw fit—to maintain his control over the town. Ultimately, though, this was the last straw, and vigilante townspeople rose up and murdered Smith in July 1898.

What Should I Line my Sluice Box With?

By Pres. JJ Long



Well now, that is just about the 64,000 dollar question. I have been arguing this same question with fellow prospectors for a long time. Back in the day, of course, they often used mere wooden slats across their sluice boxes to break up the flow and give the ‘heavies’ a place to fall out behind the riffles. Somebody started using a porous material that became known as ‘miners moss’, and that seemed to soak up a lot of gold even better. And then along came ribbed carpeting and that took the creeks and rivers by storm. And the arguments began. In recent years, a newcomer has come to the table, creating a rubberized product that has been called Gold Hog. And they have taken things a whole lot farther than just one model. They have engineered different models for all different kinds of applications such as deep water, shallow water,

slow water, fast water and so on and so forth. So that brings us back to the question of what should I use to line my sluice box with?

I started out a long time ago the same as everybody else, using the green (or blue) ribbed carpeting that Keene, Royal and everyone else was putting in their products. And it

worked pretty good for me. And I even tried miners moss as well and found that it was very porous and I lost a lot of fine gold after it loaded up. So I started to experiment, like every other prospector that has been around for a while. Colorado is known for our fine gold in the majority of our streams and rivers and it doesn’t take you very long to realize that you need to up your game when dealing with that fine gold, be it a gold pan or a sluice box or whatever. When Keene Engineering and others began using a black ribbed rubber matting in some of their products, I got lots of excited. I found that I could use that matting in all kinds of different ways and combinations with green ribbed carpeting as well as with miners moss to create different catch rates of that fine gold. Different combinations worked differently in slow water versus fast water, in sluice boxes versus high bankers, and so forth. I never had





Gold Prospectors of the Rockies Page 6

the money or the time to invest in a dredge but I heard from a lot of guys who were dredging and they would talk about different combinations of mattings that gave them the best results. No matter what you were using, the angle of the box and the flow of material as well as the flow of the water seemed to be the most important factors to consider when deciding what to use and how to use it. Slower water seemed to be better for using standard green ribbed carpeting in sluice boxes. You could actually speed things up when using a high banker and still capture a high percentage of fine gold. Miners moss tends to load up heavily with black sand and you have a very high loss of fine gold if you don't put something under the miners moss, like green carpeting or the black rubber ribbed matting. Then your capture rate goes way up. You need to understand that each product you use operates differently. A gold pan works one way. A sluice box works a completely different way. A high banker is similar to a sluice box but can move far more material at a faster rate. A dredge works very similar to a high banker but moves even more material at a faster rate yet. And what you choose to line them with can make all the difference in the world.

After all that has been said, Gold Hog has come out with a line of different combinations that you can use that arguably makes the age old argument of carpet versus moss practically obsolete. And it seems to work in nearly any type of situation that you want to use it in. A dredger named 'Grubstake' once told 'Nugget Brain' on a Forum site the following: *"Unless you have a really good water flow, miners moss won't work as well as it will load up, ribbed carpet is better, if you have you angle, its set right, and your water flow is moderate. I feel it does a better job in a sluice, but it is a different story for a dredge, I always ran half and half. I just hate cleaning the carpet. It is a pain. Moss loads up faster when you have lots of black sand but it holds a lot as well. It needs cleaned up every few hours. I just never feel like I can get all the fine gold beat out of the carpet and I can see that the moss is clean. I recently ran a short test trying to overload my long tom with black sand and a small amount of flour gold. I laid the new gold hog matting in the sluice. I put a catch tub under the sluice and fed the gold in mixed with some classified material and a few gallons of black sand. It looked like the matting was plugged with black sand the entire length, but it was dancing. After I panned the tub, I didn't find a speck of gold. It was all still in the sluice. Then, I increased the angle to 4 inches a foot and really poured the water through. The sluice was all white water. It dumped more black sands into the tub, but again, no gold left the sluice. I was very impressed. Yesterday I refitted the dredge with gold hog matting, so I guess I am all in for the opener of dredge season at least. My one cent is that I haven't been doing this long enough to have my opinion worth two whole cents. I did have to take out the dredge riffles and build new ones. The new ones are just flat stock spaced every six inches across the seams in the gold hog matting that hold it down tight in the sluice. I put stock at every seam so that I can remove the individual gold hog matting pieces for faster clean ups. I ran about ten inches of slick plate then six inches of the UR matting (the short stuff that almost looks like vmat) then a foot and a half of the UR under 3/4 expanded metal, then the more aggressive scrubber matting with the build in riffles in the bottom. To prevent gold migration under the matting or down the sides, I lined the entire sluice with no slip rubber shelf liner. The shelf liner really works well as a base layer no matter what you line your sluice with. I intentionally put the scrubber matt in the lower part of the sluice to reduce turbulence and catch fines in the top. We don't get much gold bigger than flakes. For my stream sluice and clean up sluice I was experimenting with, I ran with no riffles at all and the matting stayed put, but I thought with the higher flow in the dredge, and not being there to watch it that I would feel better if it was mechanically held in place. I attached a picture of the absolute best I've used (and now 1,000 of other full time miners), is this Shaw Veranda unbacked 54163. Much higher staggered pile than the Keene and it lets 50 mesh migrate on through to hold, it cleans easily, is cheap and lasts forever as that piece shown is over 25 years old and many, MANY 10's of 1,000's of hours in outback ops. Moss impacts like cement with the first plug-up and adios from that point on as you gotta clean every time engine is shut down. Test it yourself and proven fact and ya never go back. The stagger increases your holding area considerably and the bumps are hollow piles that suck them micro fines down to safety. And no, I do not recheck tailings for many years now-tons of au. 2 u 2 -John, also sometimes known as aggregate marine/outdoor, also takes a heck of a beating too."*



Now, I thought that exchange was truly fascinating. Here was an experienced old Californian dredger who knew what he was talking about even while trying to be humble about it. I think Gold Hog should pay the guy a little stipend for the advertisement. So what does Gold Hog have to say about their product? Well, they say this:

"Answer this question... What is $G \div W \times SG \times P \times ST = X$?? We can't answer it either... but it's kind of what happens when people send us an email saying... "I have a 10" x 48" sluice what mats should I use?" or "What's the best mat to capture both fine gold and nuggets?" That simply is not enough data or info for us to offer advice. It's kind of like



Gold Prospectors of the Rockies Page 7

emailing your doctor and saying.... I'm sick... I need you to write a prescription. To spec out ANY system or sluice we must determine the exact sluice energy and better understand the slurry running through it. Things like what type of equipment do you have, the GPH running through it, gold size in your area, etc... are important. We will STRONGLY recommend you shoot a 30 second video of your sluice with water running through it. That 30 seconds will answer more questions than you can imagine. You can upload it to you-tube, send it via email, or send it via DROPBOX.com which is a free service we also use. If you can't get a video... then provide us with detail information. JUST VIDEO the sluice with material or water running through it. That's really what we care about. 1) What type of equipment are you running? Stream sluice? Highbanker? Dredge? Commercial Op? Other details can be critical as well. Example: if a dredge... crash box or flare? 2) Post the water ENERGY info., sluice WIDTH and gallons per inch running through the sluice. Just posting your PUMP gph is not often enough. 3) Post any other info that might be helpful, such as problems that currently exist with your system. List special material you are running, etc. Remember... every single sluice in the entire world runs differently. If it's not a difference in the equipment, then it might be the dirt being run. That is very important as well. We speck out operations and individual's and company's equipment from all around the world 7 days a week. Whether it is a guy running a stream sluice by himself to a large corporate mining op with 20 plants each running 200 yards an hour, the needed info is the same. Thanks... The Gold Hog Advisory Team.

And that is exactly what they will do. It has become a game changer. I know guys all over the country and all over the world are now using these gold hog mats in their equipment. Do I use it myself? No, I haven't made the change yet but I am thinking about it. A good friend told me a while back, "JJ, you gotta let go of the past and look ahead. Your equipment is ok, but for crying out loud, you need to do it easier, not harder!" Maybe he is right. What do I use? Actually, I use everything but the gold hog matting. In my sluice, I removed the original green carpeting and I run a simple non aggressive v-matting the entire length of my box with standard modern miners moss under all the riffles. In my high banker, I run the standard green ribbed carpeting, throughout all three stages. These set ups have worked for me for a very long time and my catch rate based on sampling is pretty good. Could I do better? Of course I could. Do I lose any gold? Well, of course I do. But I don't lose as much as you would think and that is the only reason that I keep using what I am. I don't think there is anything made today that is 100% recovery. To be successful, you have to minimize that loss to as little as you can find acceptable. That is the key. But what I am amazed more about is the fact that this gold hog matting in its various types and designs, is winning over some of the best prospectors across the entire country and even the world. And I personally know some of these guys that have switched. They used to use what I use now. And that says something about the ability of a manufacturer and product to get the job done. And I believe there is no harsher a judge than a hardened and experienced gold prospector....for a fact. I just may have make that change myself.!!

Mining Concerns from Around the Country

(In my attempt to keep our members aware of what is happening involving mining from around the country, I will run this little section every month or so and see how it goes. I am apt to put a little passion and some direct finger pointing in my reporting, for which I will offer no apology to anyone who may feel offended. I support responsible mining and responsible miners, period.

Legislative Update:

With the arrival of the Corona virus Pandemic, travel to Washington D.C. got slowed down quite a bit. That has resulted in the folks from the ICMJ and the PLP having to spend more time on the phones with certain congressional folk rather than meeting in person to discuss the mining issues that have been proposed. The good news is that it would seem that the President is very interested in the proposals that have been put forth. The Administration is very serious about fixing many of the problems highlighted by Scott Harn, the editor of the ICMJ, and Clark Pearson, President of the Public Lands for the People (PLP), and recently making considerable changes and improvements to the National Environmental Policy Act (NEPA). The primary focus was on the many regulatory hurdles delaying and/or preventing miners from beginning or continuing their operations. The American Mining and Exploration Association discussed similar issues with the current administration and with the National Mining Association focused on the regulations hampering larger mining concerns, while other professional organizations brought up regulations hampering the construction of roads, bridges, transmission lines and even wind projects. Some of the problems of course, were: 1) the failure of agencies to review and approve Notices or Plans in a timely manner; 2) the ridiculous length (in pages) of Environmental Assessments, and Environmental Impact Statements; 3) Categorical exclusions (CEs) for activities with little or no significance; 4) including 'economic impact' as a consideration; and 5) frivolous lawsuits by environmental extremist groups. There have been no



Gold Prospectors of the Rockies Page 8

significant changes to NEPA since 1978, but there has been hundreds of court cases litigated on NEPA issues. One very significant proposed change to the Rule is that NEPA is not applicable for non-discretionary activities. In other words, if an activity is approved under another statute (i.e. the 1872 Mining Law), then NEPA does not apply. Currently, US Forest Service regulations under 36CFR 228 yield to NEPA because of faulty decisions handed down by the 9th Circuit (of course, who else??). This proposed rule could remove those faulty rulings and reset the rules to the original intent of the Congress. The proposed NEPA rule was published in the Federal Register on January 10, 2020. Constructive comments were taken until March 10, 2020.

Efforts are also underway to fix the Endangered Species Act (ESA). We have all seen the US Fish and Wildlife and other Agencies use this Act to close off access to public lands in an effort to close access to mining claims and mining operations by using some obscure floral or fauna as an excuse. And on January 15, Western Caucus members in the House introduced a 17-bill legislative package to ‘modernize the Endangered Species Act. Some of the proposed changes to the ESA are: 1) The ‘Petition Act’ attempts to prevent organizations like the Center for Biological Diversity (a left wing conservation extremist group) from overwhelming the US Fish and Wildlife with frivolous endangered species petitions, which have then been used as a means to obtain large settlements from lawsuits; 2) The ‘Whole Act’ would allow federal agencies to consider ‘the totality of conservation measures underway’ before taking federal action; 3) The ‘Listing Reform Act’ would force federal agencies to consider possible economic impacts of an ESA listing of threatened or endangered; 4) The ‘Bring ESA Into the 21st Century Act’ would prevent a federal agency from creating critical habitat where there is no evidence that a species is present; 5) The ‘Property Rights Protection Act’ would prevent a federal agency from designating private property as critical habitat without the property owner’s approval. These are just a few of the highlights of the many proposed changes that are in progress. You can see from the mere description of some of these Acts, what some of these agencies have been doing to the mining industry. Now that we have an Administration who is keenly aware of China’s control over some of our badly needed rare earth elements, maybe we will be seeing some major improvements soon. China has been slowly trying to get a death grip on some of this stuff and putting a lot of other nations such as ours in a bind. We need to stop that. The previous administration was slowly strangling the mining industry. I hope and pray for another four years from this President and a return to sanity and fairness in how our miners and the industry are treated.

Understanding Flood Plain Gold Deposits

from GPAA Gold Rush webpage

You might have heard the term “flood plain gold” and are wondering what it really means. A very simple definition is “fine-sized gold flakes carried or redistributed by flood waters and deposited on gravel bars as the flood waters recede.” When this “redistribution” occurs, it is usually after heavy winter storms that churned up rivers enough to turn part of the bedload over and move the river bar gravels from one place to another. Within these gravels is fine gold that was previously deposited there. When waterways flow way up and above their normal banks, they generally drop the heavier gold in the front of the bar, and as pressure decreases, the finer gold starts dropping into the mixed gravel. Over time, some of this finer gold will work its way down to bedrock, but generally it stays on the move.



How did the gold get there in the first place? There are many classifications of placer deposits, and their definitions can provide the answer. Among the most well-known is **stream placers**. Streams carry gold from eroded veins and concentrate them in various ways. **Modern streams** refer to present-day gold-bearing waterways that are the most common sources of gold for today’s prospectors. **Tertiary and intervolcanic channels** are rivers buried from mud and volcanic flows that existed prior to our modern-day waterways. **High benches** were created as rivers cut their way deeper into the bedrock and could be located hundreds of feet above today’s modern rivers. **Desert placers** are generally the result of torrential flash flooding and not a constant water flow. **Glacial stream deposits** are created by melting glaciers that can concentrate gold if the water flow is sufficient. **Marine or beach deposits** can come from wave action against cliffs, from off-shore currents bringing in gold-bearing material from under the ocean, or even from gold-bearing streams that flowed into the beach area eons ago.



Gold Prospectors of the Rockies Page 9

Since there is a strong possibility that gold can get moved around during storms, it's now important to know WHERE to find this "dropped out" gold. The secret is to find that drop point and to capitalize on its accumulation. Fine gold looks fantastic in a pan or box, but its weight can be deceptively light. It takes a lot of fine gold to be equal to a larger piece and to have enough weight to make the recovery effort worthwhile. Some of the best areas to look for flood plain gold are where the stream or river widens out, or levels out, or changes direction. The inside of a bend is good. Rocks and weeds and small shrubs are also potentially good collection spots. When checking out collection spots, be extra careful. Calm water on the surface can hide swift currents underneath.

Keep in mind that the effects of heavy winter rains and snow will not be the same on all waterways. Redistribution might occur to a larger degree on larger rivers. Or it could be the opposite where you live and prospect. No one hopes for an especially "bad winter," but if Mother Nature makes it so, this information could be the silver lining— a way to turn lemons into lemonade come spring when you can get out and take advantage of any gold redistribution that occurs. Good luck and be safe!



Wild West Traders LLC

COINS GOLD SILVER

Buy - Sell Collections - Scrap
Historic, Rare, and Unusual Coins
Downtown Golden by the Welcome Arch
1111 Washington Ave Ste #105 303-279-1844



A Touch of Class In Stained Glass Studios
New Projects · Restoration
Residential · Architectural · Liturgical

Copper foil · Zinc & Lead (free) came
Kiln-fired glass painting/staining/enameling

Parker, Colorado 719-924-5578
atouchofclassparker@gmail.com
www.atouchofclassinstainedglass.com



Jesse Peterson

720-331-9072

5023 Hwy.119, Blackhawk, Colo.

GOLD - N - DETECTORS

A METAL DETECTING & PROSPECTING CENTER



(303) 278-6622
802 Washington Ave.
Golden, CO 80401

"Denver area's award winning hobby store, where we do what we sell."

- Metal Detectors
- High Bankers
- Rock Tumblers
- Books
- Goldpans
- Dredges
- Rock Picks
- Accessories

Open 9-6 Monday through Saturday
VISA, MasterCard, Discover

PLACE YOUR AD HERE

PLACE
STAMP
HERE

The Gold Nugget

Gold Prospectors of the Rockies
PO Box 150096
Lakewood, Co 80215-0096

ADVERTISING IN THE GOLD NUGGET

Commercial Ads

3.6" x 2.0" Two Column Inches (Business Card Size)..... \$6
 3.6" x 4.3" Four Column Inches..... \$12
 7.5" x 4.3" Eight Column Inches (Horizontal)..... \$24
 3.6" x 9.3" Nine Column Inches (Vertical)..... \$24
 7.5" x 9.3" Eighteen Column Inches (Full Page)..... \$48

For information to publish your "Ad" in The Gold Nugget, please contact the Editor. **COPY DEADLINE** is due to the editor by the 25th of the month for publication in the following months' issue of the Newsletter.

Contact the GPR President
(Layout Design Subject To Additional Cost)



Coming Announcements and Special Events for July 2020

(**WMMI** - Western Museum of Mining & Industry, 225 North Gate Blvd. Colorado Springs, CO 80921
<https://www.wmmi.org/>) (Free to GPR Member with badge)

SUN	MON	TUE	WED	THU	FRI	SAT
			1	2	3	4 Independence Day
5	6	7	8	9	1-	11
12	13	14 WMMI Lecture: Colorado Ghost Towns 7pm	15 GPR Club Meeting	16	17	18 WMMI Outdoor Display & Machinery Demonstration 10am & 1pm
19	20	21	22	23	24	
26	27	28	29	30	31	